

- Fire mitigation
- Your co-op, your voice
- Spring projects update
- Scholarships awarded

Join us on June 9 in Napoleon for our Annual Meeting!

Members will soon receive an Annual Meeting packet in the mail with meeting details and voting instructions. Members whose email addresses are on file will also receive email instructions on how to vote. Below is a preview of the packet.



MANAGER'S MESSAGE:

Wildfire mitigation and planning



Travis Kupper
Co-General Manager/CEO

Across the United States, the threat of wildfire has increased significantly in recent years. For electric utilities, the danger is all too real, as a power line contact can easily ignite dry vegetation and high winds can accelerate the spread of wildfire.

As wildfire threats increase, electric cooperatives are creating detailed mitigation plans, which include strategic vegetation management, infrastructure and

equipment upgrades and sometimes public safety power shutoffs.

Safety is our top priority. We've trained our crews to respond quickly and safely during emergency situations, and we're closely coordinating with local fire departments and emergency managers. We're also using mapping technology and weather monitoring tools to stay ahead of changing conditions.

Electric cooperatives are also utilizing new and developing technologies to safeguard their local grids. Some technologies help reduce the risk of fire and minimize structural damage if a fire does ignite.

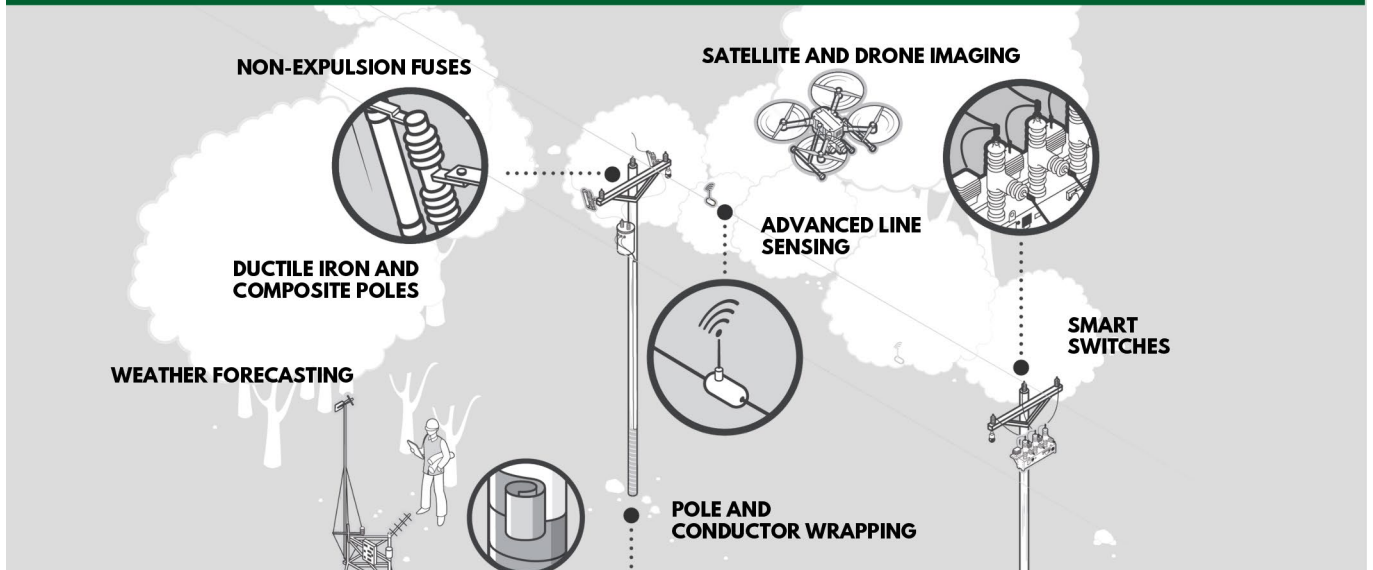
Our cooperative has been using advanced technology and specialized contractors to identify potential hotspots. We also employ infrared cameras at our substations to detect areas of abnormal heating before they become problems. In addition, our cooperative strategically deploys TripSaver and circuit reclosers during periods of elevated wildfire risk to enhance system protection and reduce the chance of a fire.

KEM Electric Cooperative was built on the values of reliability, service and community. By taking proactive steps today, we're working to ensure your power stays on and your family stays safe, no matter what challenges fire season may bring.

Thank you for your continued trust and support. ⚡



FIRE MITIGATION TOOLS



MESSAGE FROM THE BOARD: Your cooperative, your voice



Victor Wald
Board Chairman

As your board of directors, one of our most important responsibilities is ensuring KEM Electric Cooperative remains strong, reliable and prepared for the future. Each year, the Annual Meeting gives us a chance to report to the members we serve. That's why your participation matters.

Unlike investor-owned utilities, our cooperative is guided by the people who use the power we provide. Your voice helps shape priorities,

such as investing in system reliability and making decisions that support the long-term health of our cooperative. The Annual Meeting is where those conversations happen openly and transparently.

At this year's meeting, you'll hear updates on the financial position of the cooperative and major projects underway, and learn about the challenges and opportunities ahead. You'll also have the chance to take part in the democratic process that sets cooperatives apart by electing directors, asking questions and helping guide the direction of the cooperative you own.

We also recognize not everyone can attend in person, which is why KEM Electric made participation easier than ever. Members can vote online or by

mail-in ballot, giving you the flexibility to take part in cooperative governance in the way that works best for your schedule. Whether you cast your vote ahead of time or join us at the meeting, your participation plays an important role in shaping our cooperative's future.

I encourage you to attend, stay informed and stay engaged. Your involvement strengthens the cooperative and ensures we continue delivering safe, reliable, affordable electricity for generations to come. ⚡



Meet your newest board member!



Elected June 2025

Board members' commitment to fostering collaboration and driving innovation is invaluable. Todd Schnabel was elected June 2025 and brings additional perspectives that enhance our decision-making processes and helps us serve our members. Learn more about Todd Schnabel below.

Todd Schnabel, District At-Large

My wife Tanya and I reside northwest of Lehr, where we manage a small cow/calf operation on the farmstead where I grew up.

Occupation: I have been employed with First Community Credit Union for 19 years. I am currently a senior ag loan officer.

Community involvement: I have served on various boards, including the Wishek Hospital Clinic Association, Wishek Job Development Authority and my local church. I also volunteer with the Wishek Association of Commerce and am active in Sauerkraut Day and Summer Fun Days. I am a blood donor and have donated over 50 times in community blood drives.

MESSAGE FROM OPERATIONS: **Spring projects update**



Dale Nagel

Chief of Staff/
Line Superintendent

As KEM Electric Cooperative crews begin to prepare for summer construction projects across the service area, we'd like to share about the projects keeping our line crews busy. The mild weather has helped line crews advance various projects, such as pole changeouts and maintenance.

Infrastructure maintenance

KEM Electric crews have performed line patrol on overhead and underground power lines. Line patrol is an inspection of cooperative infrastructure across the service area which allows the cooperative to identify and make repairs before further issues arise. During line patrol, crews note if something needs maintenance or immediate assistance and make the necessary repairs.

Line crews and contractors completed power pole changeouts throughout the service area. These power poles were identified to be replaced during line patrol or through pole testing, which was conducted late last year. Crews and contractors also installed anchors on

power poles in slough areas to help with the stability and longevity of the poles in these wet areas.

Additionally, crews retired aged power lines due to service retirements at the member's request or because the line was no longer needed. Retiring idle line reduces maintenance, exposure for outages and overall costs.

Outage mitigation

In steps to reduce outages, KEM Electric crews and contractors perform tree trimming throughout the year. Through line inspection or by member notification, the cooperative has a list of areas where vegetation needs attention. Trimming trees can assist in reducing blinks and outages during windy days and is part of KEM Electric's wildfire mitigation plan. In late 2025, contractors completed tree trimming across our service area.

The operations department has been diligently planning and preparing for upcoming projects this summer. Materials have been ordered, and easements and permits are being obtained.

As we continue to work across the service area, we encourage you to report any issues or safety concerns you may see on KEM Electric's infrastructure by calling the office at 701-254-4666. ⚡



MESSAGE FROM MEMBER RELATIONS:

Luck-of-the-Draw Scholarships available

**Marcy Sanders**

Manager
of Member Relations

As our Annual Meeting approaches on June 9 in Napoleon, we are excited to share additional scholarship opportunities.

This year, KEM Electric Cooperative will award eight \$500 Luck-of-the-Draw Scholarships to graduating high school seniors.

Each year, KEM Electric offers this additional opportunity to students who have not been previously awarded a cooperative scholarship. We are excited to share that KEM Electric's board

of directors approved six additional scholarships to be awarded this year. These funds became available because KEM Electric did not receive scholarship applications from all area high schools.

We look forward to powering the future of students within our communities through these scholarship opportunities. ⚡

FAQ

Who is eligible? Graduating high school seniors who are dependents of KEM Electric Cooperative members.

How do I sign up? Join us at our Annual Meeting on June 9 in Napoleon, along with a parent/guardian who is a KEM Electric member. Students must register at the Annual Meeting for their name to be added to the scholarship drawing.

Do I have to be present to sign up and receive a scholarship? Yes, you must be present at the Annual Meeting on June 9 to register and qualify for the Luck-of-the-Draw Scholarship.

If you have any further questions, call our office at 701-256-4666.

Congratulations **CLAIRE BADER FROM WISHEK PUBLIC SCHOOL!**

MARCH TOUCHSTONE ENERGY® STUDENT OF THE MONTH

"She is a dedicated student who is kind to all staff and students in the school. She is a member of the volleyball team and she demonstrates what true sportsmanship should look like on and off the court," says Claire's nominator.

Congratulations to all the students who were nominated and chosen for this school year's Touchstone Energy Student of the Month! Our future is bright, thanks to all the dedicated and unique students who call our service area home.





Bridger Rivinius



Sara Pfeifle



Alea Kramlich



Elodie Kuhn



Brady Pool



Emma Sanders



Taryn Mittleider

EMPOWERING OUR FUTURE:

High school scholarships awarded

Every year, KEM Electric Cooperative powers the future by awarding scholarships to high school seniors within our service area. This initiative embodies our cooperative's unwavering commitment to community growth and celebrates the achievements of dependents of our members. By recognizing these students' outstanding accomplishments, we honor their drive, resilience and passion for their future.

This year, KEM Electric awarded seven scholarships. Students were chosen by a third-party scholarship evaluation committee. Six scholarships were given on behalf of KEM Electric to area seniors, while one scholarship was in partnership with Basin Electric Power Cooperative. We are fortunate to have partners who are invested in the future of our members. This year's scholarship recipients are:

Basin Electric scholarship

Basin Electric's \$2,500 scholarship to a dependent of a KEM Electric member was awarded to Bridger Rivinius from Gackle-Streeter Public School. The son of Daniel and Connie Rivinius, Bridger plans to attend the University of North Dakota (UND) to study philosophy and ethics.

KEM Electric scholarships

KEM Electric offered a \$1,000 scholarship to a graduating senior from each of the high schools within our service area.

Ashley Public School: Sara Pfeifle, the daughter of Michael and Linda Pfeifle, plans to attend UND to study accounting.

Kidder County School: Alea Kramlich, the daughter of Clint and Jonni Kramlich, plans to attend Bismarck State College (BSC) to study business management.

Napoleon High School: Elodie Kuhn, the daughter of James and Stephanie Kuhn, plans to attend South Dakota State University (SDSU) in pursuit of a degree in animal science with a pre-veterinary medicine emphasis.

Strasburg High School: Brady Pool, the son of Derry and Melanie Pool, plans to attend SDSU to study agricultural systems technology.

Linton High School: Emma Sanders, the daughter of Gary and Marcy Sanders, plans to attend BSC in pursuit of nursing.

GED/high school outside of area/homeschool: Taryn Mittleider, the daughter of Patrick and Ashley Mittleider, plans to attend North Dakota State University in pursuit of nursing.

No applications were received from Hazelton-Moffitt-Braddock, Zeeland or Wishek schools.

Other scholarships

Two \$500 scholarships were made available on behalf of 3C Construction and West Dakota Diesel and Hydraulics to applicants who plan to attend a certified vocational or technical school. No applications were received for the scholarships.

Congratulations to all who were chosen as this year's scholarship recipients as well as the class of 2026. We wish you all the best in your future endeavors.

Additionally, at our Annual Meeting on June 9 in Napoleon, we will award eight Luck-of-the-Draw Scholarships. Students must register for the Luck-of-the-Draw Scholarship at the Annual Meeting and attend with a parent or guardian. ⚡

SAFETY STARTS WITH ME: Electrical Safety Month



Nick Nieuwsma
Apprentice Lineworker

Working in the rural electric industry KEM Electric Cooperative employees understand the dangers and risks associated with the industry. During National Electrical Safety Month, we want to ensure you are aware of the risks and understand what you can do to prevent injuries and outages.

"Safety is a top priority at KEM Electric," says Nick Nieuwsma, an apprentice lineworker. "We work hard to do our part to keep our communities safely powered, but

when it comes to electrical safety, everyone has a part to play."

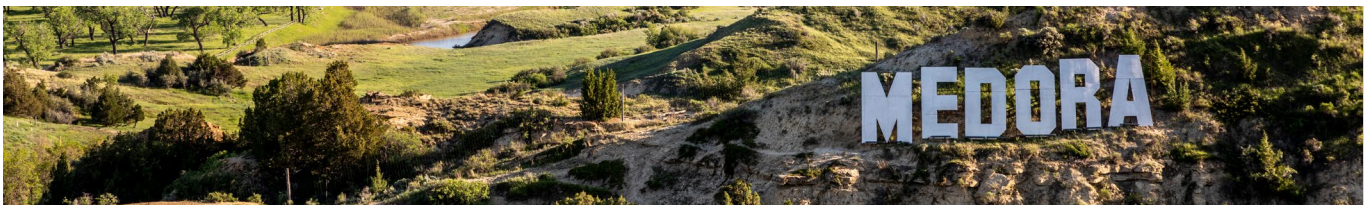
Here are a few key reminders to help keep you safe:

- **Look up and look out.** Always be aware of overhead power lines when using ladders, moving grain

augers or operating large equipment. Contact with power lines can be deadly.

- **Call before you dig.** Whether you're installing a fence, planting trees or starting a new building project, contacting 811 before you dig can prevent accidentally hitting underground utilities.
- **Don't approach or touch downed power lines.** If you see a downed power line, stay far away and report it to KEM Electric immediately. Never assume a line is dead, even after severe weather.
- **Use equipment safely.** Check cords, outlets and tools for damage before use. Replace frayed wires and never overload outlets, especially in older buildings or barns.

KEM Electric is committed to providing safe, reliable electric services, but electrical safety starts with each of us. Keeping these tips in mind, whether at home, in the shop or in a business, helps keep our communities safe and connected. ⚡



Discounts offered for Medora vacation

KEM Electric Cooperative is able to offer its members a discount by being a Touchstone Energy® member. Simply call 1-800-MEDORA-1 and give the discount code of "TOUCH2026" for a 15% discount on all of the following during any night of the season.

- Medora Musical
- Pitchfork steak fondue
- Bully Pulpit Golf Course
- Gospel Bruch tickets
- Old Town Hall Theater shows

LODGING AT ANY OF THE FOLLOWING:

- Elkhorn Quarters
- Badlands Motel
- Rough Riders Hotel
- Hotel 1883

The code is good for reservations over the phone, online or in person. A green fees discount will be applied at check-in for a tee time at the golf course.



KEM ELECTRIC BOARD MEETING HIGHLIGHTS: FEB. 24

The meeting of the board of directors of KEM Electric Cooperative was held on Feb. 24 in Linton. The meeting was called to order at 9:30 a.m. by Chairman Victor Wald. A quorum was present. Also present were co-General Managers/CEOs Travis Kupper and Jason Bentz, Chief of Staff/Line Superintendent Dale Nagel, Chief Financial Officer Alex Craigmile, Legal Counsel Jennifer Grosz and Board Liaison Connie Hill.

Consent agenda: The consent agenda was approved as presented.

Strategic items: Bentz and Kupper presented the co-general managers' report, which included updates on a N.D. Public Service Commission meeting, N.D. Irrigation Association meeting, Western Area Power Administration matters, North Dakota Association of Rural Electric Cooperatives annual meeting and other items. Several additional Basin Electric Power Cooperative reports and board documents were available for review.

Department reports: Craigmile provided a financial report, with a review of the January financials, operating revenue and key ratios. Nagel

provided a department report, which included employee updates and training. Nagel also reviewed operational projects and an outage report. Sanders provided a written department report on member feedback, youth programs, nomination information and other items. Chief Information Officer Charlie Dunbar provided a written report for the board, which included technology updates. Grosz provided an update on projects and a policy review.

Action items: The board discussed and resolved the board policy action item.

Discussion/general information: The board discussed the wildfire mitigation plan and office updates.

Executive session: The board entered an executive session during the meeting.

The meeting concluded with adjournment. Secretary-Treasurer Carter Vander Wal certified the accuracy of the minutes.

Next meeting date: The next meeting is at 9:30 a.m. on May 26 in Linton. ⚡

SMARTHUB Simplified | Pay anywhere!



Access current and past bills, check payment history and pay your bill electronically from anywhere with SmartHub!

KEM ELECTRIC COOPERATIVE INC.

DIRECTORS:

Victor Wald, Chairman, District 4.....Napoleon
John R. Beck, Vice Chairman, District 1.....Linton
Carter Vander Wal, Sec.-Treas., District 2.....Pollock
Dean Dewald, Director, District 5.....Dawson
Neil Meidinger, Director, District 3.....Zeeland
Carmen Essig, Director-at-Large.....Lehr
Todd Schnabel, Director-at-Large.....Lehr

Your Touchstone Energy® Cooperative 

MANAGEMENT:

Travis Kupper.....Co-General Manager/CEO
Jason Bentz.....Co-General Manager/CEO

Report outages to the following toll-free number: 800-472-2673

Hazleton, Linton and Strasburg exchanges' phone number: 701-254-4666

OFFICE HOURS:

Monday through Friday,
8 a.m. to 4:30 p.m.

Website: kemelectric.com

Email address: info@kemelectric.com

FIND US ON:

