

- The cooperative way
- Call before you dig
- Students of the Month
- Annual meeting June 11

LIGHTING THE WAY: Recognizing our lineworkers

National studies consistently rank lineworkers among the most hazardous occupations in the nation, and with good reason. Laboring above the ground, wearing heavy equipment and working directly with high voltage creates the perfect storm of a dangerous and unforgiving profession. Nonetheless, electric lineworkers rise to the challenge.

These courageous individuals are unwavering in their commitment to safety and the demands of their trade. KEM Electric Cooperative's lineworkers bear the responsibility of ensuring a continuous flow of power, regardless of holidays, vacations or family milestones.

Beyond the extensive training and apprenticeships, success as a lineworker demands inner strength and a steadfast dedication to the mission. Certainly, lineworkers epitomize stewardship, placing the welfare and maintenance of their service area as an important priority.

"I couldn't ask for a better crew to work with and represent KEM Electric," says Line Superintendent and Chief of Staff Dale Nagel. "They consistently go the extra mile to ensure the job gets done, demonstrating their genuine care for both the cooperative and our members." ⚡

Get to know our dedicated lineworkers:

"KEM Electric members are great and they are always willing to help out when needed."



KEVIN HORNER, Linton area foreman, 11 years

The job of a lineworker is... pretty neat

What do you enjoy most about being a lineworker? Being outside and doing something different every day

Hobbies: Working on the farm or hanging out with family

What is your go-to gas station snack and drink? Beef jerky and Mountain Dew

"The members of KEM Electric are always willing to help out, which I appreciate."



TYLER JACOB, journeyman lineworker, 7 years

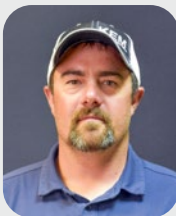
The job of a lineworker is... to keep the members' lights on

What do you enjoy most about being a lineworker? Working outdoors

Hobbies: Camping, hunting and spending time with family

What is your go-to gas station snack and drink? Beef jerky and Mountain Dew

"One thing I enjoy about working for an electric cooperative is being able to serve the community where I live."



MARTIN MESSER, Steele area foreman, 12 years

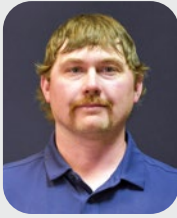
The job of a lineworker is... keeping the lights on

What do you enjoy most about being a lineworker? Working outside

What do you appreciate about KEM Electric's members? Their willingness to help

Hobbies: Camping, hunting and fishing with family and friends

"Our members are always willing to lend a hand if we need any help."



AUSTIN OHLHAUSER, journeyman lineworker, 11 years

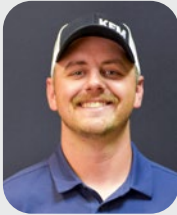
The job of a lineworker is... challenging and rewarding

What do you like most about working for an electric cooperative? The different linework tasks we perform day to day

Hobbies: Spending time with family and friends

What is your go-to gas station snack and drink? White Monster and Reese's

"While working at KEM Electric, I have gotten to know and work with people from cooperatives around the state, which I've enjoyed. It's a tight-knit group."



KIRK PRAUS, journeyman lineworker, 10 years

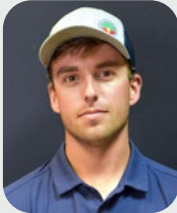
The job of a lineworker is... to maintain the electrical grid and build new services for members

What do you appreciate about KEM Electric's members? Our members understand that storms happen, and they are patient while we are out working to restore power

Hobbies: Spending time with family and friends, hunting, fishing and anything outdoors

What is your go-to gas station snack and drink? If there is an egg roll in the warmer, I'm going after it

"I appreciate our members' loyalty and kindness to the cooperative."



TYLER SCHUMMER, journeyman lineworker, 7 years

The job of a lineworker is... to maintain and construct distribution and transmission systems

What do you enjoy most about being a lineworker? Working outdoors and the challenging tasks we are given

Hobbies: Hunting and fishing

What is your go-to gas station snack and drink? Soda and pizza

"I appreciate the members' willingness to help us when needed."



DILLON STEINOLFSON, journeyman lineworker, 5 years

The job of a lineworker is... to do line work

What do you enjoy most about being a lineworker? Working outside

What do you like most about working for an electric cooperative? The atmosphere of working here

Hobbies: Spending time with friends and family

"I enjoy being able to serve the small community where I live."



JAKE ZINK, journeyman lineworker, 17 years

The job of a lineworker is... keeping the lights on and keeping the public safe from the dangers of our system

What do you enjoy most about being a lineworker? Working outside

What do you appreciate about KEM Electric's members? Their willingness to help

Hobbies: Fishing with family and friends

MANAGER'S MESSAGE:

Celebrating our lineworkers

**Jason Bentz**

When picturing our electric cooperative, the image of a dedicated lineworker typically springs to mind. These individuals embody our commitment to serving our members, working tirelessly day and night to ensure our community receives uninterrupted power. However, their role goes beyond maintenance. They are the unsung heroes who exemplify dedication,

bravery and a profound sense of service.

On April 8, let's take a moment to express our heartfelt gratitude to our lineworkers for their exceptional service, as we celebrate National Lineworker Appreciation Day. When you see lineworkers in action, I encourage you to join me in thanking them for their dedication and bravery.

A lineworker's job: Ranked among the top 10 most dangerous jobs in the United States, a lineworker's responsibilities are far from easy. Working in close proximity to high-voltage power lines, they must perform intricate tasks in all weather conditions, often scaling heights of 40 feet while carrying heavy equipment. Despite the inherent risks and discomfort, they stay unwavering in their commitment to their duty and the members.

And behind every dedicated lineworker is a supportive family who plays an integral role in enabling their loved ones to serve the community. While lineworkers are in the field, sometimes working all night to restore power, their families take care of the home front, providing support and understanding during challenging times.

The heart of service and dedication: Becoming a lineworker is not merely a profession. It's a calling that requires years of specialized training, ongoing education and a deep sense of service. It's about leaving the comfort of home to tackle challenging tasks when most are sheltering indoors. This dedication and sense of service to the community define the essence of our lineworkers and their indispensable role in our cooperative.

Recognizing the team behind the scenes: While lineworkers are the most visible faces of our cooperative, it's essential to acknowledge the team of highly skilled professionals working tirelessly behind the scenes. From engineers providing invaluable expertise, to member service representatives fielding inquiries and information technology experts safeguarding sensitive data, each member of our cooperative family plays a vital role in ensuring the reliability of our services.

Expressing gratitude: To our lineworkers and the entire cooperative family, we extend our deepest appreciation for your tireless dedication and invaluable contributions. Your unwavering commitment to keeping our local service area powered and your willingness to go above and beyond the call of duty do not go unnoticed. We are grateful for your service and sacrifice.

As we celebrate Lineworker Appreciation Day, let's honor our lineworkers for their unwavering commitment to service and sacrifice. Let's express our gratitude not only to them, but also to the entire cooperative family for their efforts in ensuring service reliability. ⚡



CELEBRATE

the Power Behind Your Power.

Lineworker Appreciation Day | April 8



SAFETY STARTS WITH ME:

Call before you dig

As the weather warms and spring begins to appear, you may be planning your to-do list for the upcoming months. If those projects require digging, don't forget to call 811 before you start. Projects ranging from planting trees, building a house or installing a fence require a call.

"Underground utilities, such as electric, telephone, gas and water lines, can be a shovel thrust away from turning a project into a disaster," says Jake Zink, journeyman lineworker.

Even simple tasks, such as installing a new mailbox post, can damage utility lines and disrupt service to an entire neighborhood, harm diggers and potentially result in fines and repair costs.

Play it safe by dialing 811 or visiting www.ndonecall.com to find out where utility lines are located on your property.

Be prepared to share the following information about the project property to North Dakota One Call:

- Name and contact information
- Proposed digging date and time
- Legal description
- County, city and street address
- Nearest intersecting street
- The owner of the property
- Type of work planned and extent of work and depth

Within a few days, a locator will arrive to designate the approximate location of any underground lines, pipes and cables. These areas will be marked with flags or



paint, so you'll know what's below. That is when the safe digging can begin.

"Never assume the location or depth of underground utility lines," Zink says. "There's no need to assume, as the 811 service is free, prevents the inconvenience of having utilities interrupted and can help you avoid serious injury."

For more information about local services, visit www.ndonecall.com. ⚡

PLANNING TO BUILD OR UPGRADE?

Give us a call

Whether you are looking to build a new structure or make changes to an existing structure, it is important to contact KEM Electric Cooperative in the early planning stages.

By doing so, you will be able to confirm the viability of your project. KEM Electric's engineering department can verify whether we can serve additional load in your area and the availability and cost of equipment and materials.

Information you will need to share with the cooperative includes the type of upgrade or new build, location, timeline and power requirements.

KEM Electric wants to ensure your building project or upgrade goes as smoothly as possible, and that is why it is important to call in the early stages of planning. ⚡



ADDRESSES NEEDED:

Unclaimed capital credits

KEM Electric Cooperative needs new addresses to mail members their capital credit allocation statements and/or capital credit check from last year. The following list of KEM Electric members and their current address on file (last known address) were mailed allocation statements and/or checks, which were returned from the post office because it was "not a deliverable address," "unable to forward" or "attempted not known." If you know of a current address, please call the KEM Electric office at 701-254-4666 or 800-472-2673.

These are unclaimed capital credit allocations as of Feb. 22.

JOHN ACKERMAN
WILLIAM ADAMS
JARRID ARNDT
DAVE BAUMAN
FRANK BAUMGARTNER
TONY BENDER
DONOVAN BOSCHEE
JAMES BOWER
IVA BURCHETT
COMMNET WIRELESS LLC
CORPS OF ENGINEERS
JAMES CUSEY
MARK DAHLSTROM
LES DAVIS
DAWSON CREEK
RESEARCH FARM
DEVORE CUSTOM MEATS
EILEEN DEYLE
DELORIS DIEGEL
PAULETTA DOHN
GARY DOLL
VERL DORNBUSH
DRAEGER BROTHERS
TIM DRONEN
GARY EHLEY
LAWRENCE ELL
ELDA ERBELE
BEN ERICKSON
GORDON FEIST
MARK FEIST
ROBERT FEIST
JAN FRANSEN
LYNETTE GEFROH
CLINT GEORGE
LLOYD GIESE
LORRAINE GIESE
DERRICK GLAESMAN
TRAVIS GLAESMAN
MARK GLASS
DOROTHEA GRAFF
GRANNY'S
HOUSE ANTIQUES
MATTHEW GRENZ
DAVE GRINSTEINER

TIM GROSS
VAL GROSS
MICHAEL GULLICKSON
GARY HAAK
HAAK BROTHERS
RUTH HAIBECK
LYNETTE HANSON
ELMER HARPOLE
MICHAEL HARRIS
TARA HARTER
DELMAR HERR
MYRON HUBER
LEO HULM
RUBEN HUMANN
ISZLER'S OUTBACK
JB CONSTRUCTION
ALAN JACOB
SHANE JAHNER
MARTY JANKE
SANDY JOB
JOHN'S AUTO BODY
ARVADA JOHNSON
EDWIN JOHNSON
RANDY KAPP
JASON KELSCH
ALTON KEMMET
GLADYS KEMMET
TERRY KEMMET
JODY KETTERLING
RANDY KETTERLING
ALAN KLEIN
JEFF KLIPFEL
DELBERT KNOEPFLE
RANDY KNOEPFLE
WILBUR KNOLL
JASON KNUDSON
STEVE KOESTER
VERNON KRAMER
PAUL LAINE
LARRY LANG
JERRY LAUNGER
DEAN LAWLER
BRODRICK LEE
BRIAN LEIER

GERALDINE LIPPERT
CHRIS MAIER
ROSE MAIER
MIKE MANN
GLENN MCCRORY
SCOTT MCCULLEY
VERNON MEIDINGER
RICK MITTLEIDER
DAVID MOCH
TROY MOCH
ANTHONY MOCK
CAROLINE MOCK
KENNETH MOSER
JEANETTE NICKISCH
CURTIS NIES
FRANCES NIEUWSMA
DALE NYGAARD
JAMES OHLHAUSER
JUSTIN OLSON
PAUL OLSON
RYAN OLSON
CHARLES PALS
MIKE PAUL
SAM PIATZ
TERRY PRESZLER
DEAN PUDWILL
DARRYL RAU
LINDA RETZER
CLARENCE REUER
TODD RODENBURG
ALVIN ROESLER
GORDON RUDY
ROBERT RYCKMAN
CLARICE SAVILLE
IRENE SAYLER
VIDEO SAYLER
MELVIN SCHAUER
JAMES SCHILLING
JOE SCHLOSSER
WAYNE SCHMITCKE
CLARENCE SCHULTES
JACK SCHWAB
GILBERT SILBERNAGEL
STEVE SILBERNAGEL

JEFF SMITH
GLORIA SOULE
LLC STATELINE RESORT
LYNETTE STEWART
ARTHUR STOKES
ELAINE STRAMER
BRYAN STROH
MARK STROH
SHAWN STROH
MYRON STROM
ALAN SVANES
ALLAN THOMAS
DARLENE ULMER
VEY U.S.
GEOLOGICAL SURVEY
JERRY VAN BEEK
CHAD VANDER VORST
MONTE VANDER VORST
LOUIS VANDER VORSTE
VERIZON WIRELESS
EDWARD VETSCH
GARY VETTER
W&S RANCH
MONTE WAHL
ANDREW WALD
DUANE WALD
PIUS WALD
LEROY WALTHER
LINTON WASTE
MANAGEMENT
JOHN WEBER
TIM WERRE
WESTERN WIRELESS
WESTERN WIRELESS
CORPORATION
HERBERT WIEST
CLARENCE WOHL
ROSEMARY WOLF
BRADLEY ZIMMERMAN
REED ZIMMERMAN ⚡

STUDENT OF THE MONTH:

Malachi Huber, Strasburg Public School

Malachi Huber was named the February Touchstone Energy® Student of the Month from Strasburg Public School. A senior, Huber was recognized as a passionate and dedicated leader around the school and community. Huber is son of KEM Electric members, Marvin and Leona Huber.

“He is always willing to help, encourage and offer creative insight as well as enjoys being part of the

solutions,” says Huber’s nominator.

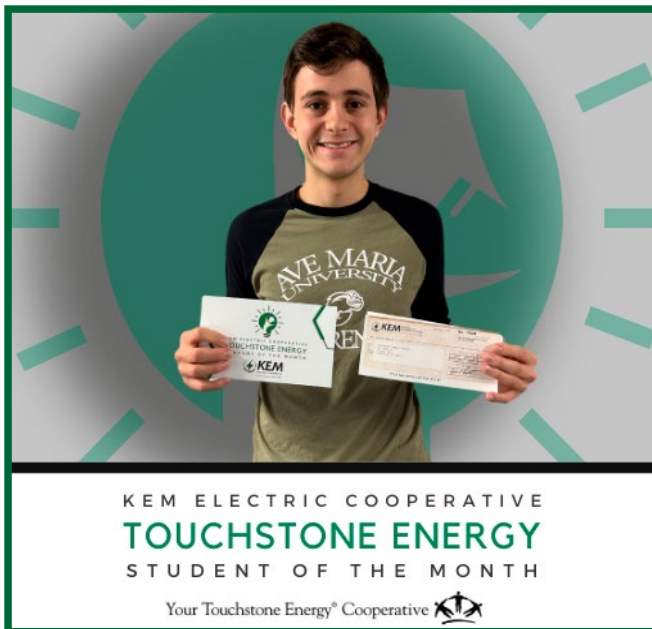
Huber plans to utilize the funds to treat the 7-12 graders to ice cream.

We would also like to recognize the other outstanding students who were nominated:

- Mary Baumgartner
- Shonda Haak
- Rebecca Lauinger
- Jacob Vander Vorste
- Nicole Vander Vorste

Throughout the school year, KEM Electric Cooperative is choosing one student at random nominated from the schools in KEM Electric’s service area to receive a \$100 sponsorship in partnership with Touchstone Energy Cooperative. The donation can be utilized to the student’s choosing for school activities.

In April, KEM Electric is accepting nominations of students from Zeeland Public School. The deadline for nominations is April 25. This is open to all K-12 students. ⚡



Scan the QR code with your smart phone's camera to nominate a student or for more information, or visit www.kemelectric.com/touchstone-energy-student-month.



POWERING THE FUTURE:

Luck-of-the draw scholarships

KEM Electric Cooperative believes in investing in the future of the students in our service area. At the annual meeting on Tuesday, June 11, KEM Electric will award two \$500 luck-of-the-draw scholarships.

All 2024 high school seniors who are dependents of KEM Electric members are eligible for this scholarship. Students who have previously won a cooperative scholarship are not

eligible for luck-of-the-draw scholarships. Students must attend our annual meeting and be accompanied by at least one parent or guardian.

We ask participants to RSVP before the meeting. Students can RSVP by scanning the QR code with your smart phone's camera, visiting our website at www.kemelectric.com/scholarships or by calling the office at 701-254-4666 or 800-472-2673.



KEM ELECTRIC CELEBRATES 80 YEARS



APRIL 4, 1944

EMPOWERING COOPERATIVE PRINCIPLES:

Attend KEM Electric's Annual Meeting

KEM Electric Cooperative is gearing up for the 2024 annual meeting, which will be held at 5 p.m. Tuesday, June 11, in Linton at Our Club Hall, formally the Knights of Columbus Hall.

The annual meeting is a special time for members to gather, share experiences, hear from our leadership and vote to elect board directors. We know the food, camaraderie and prizes are the best parts of the meeting, but there is so much more to the event.

The annual meeting also offers the opportunity to exercise one of the greatest benefits of being an electric cooperative member: voting for the upcoming year's board of directors. KEM Electric is operated by a democratically elected board given the privilege to serve because of your vote.

During this year's voting process for your

cooperative, KEM Electric will be offering multiple voting options. You will have the opportunity to vote online, by mail or at the annual meeting.

If a member casts a timely vote prior to the meeting by mail or online, the member will not receive a ballot at the annual meeting. Members will receive the 2023 annual meeting report and the election paper ballot in the mail around May 20. Included in this mailing are voting instructions for all three voting options. Please vote by mail or online, unless you know you will be attending the annual meeting on Tuesday, June 11.

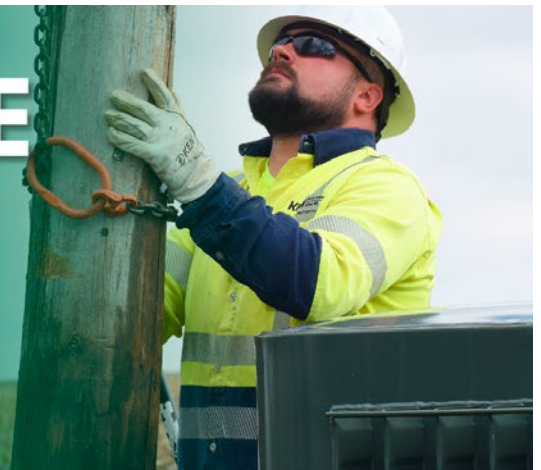
As an added thank you for joining us at the annual meeting, all who attend will be entered for the chance to win door prizes, which will range from Medora Musical tickets to bill credits. We hope to see you there! ⚡

SAVE THE DATE

KEM Electric Annual Meeting

Tuesday, June 11

Our Club, Linton



KEM Electric board meeting highlights

January 17

The January meeting of the board of directors of KEM Electric Cooperative was held on Jan. 17 at BEK Communications in Steele. Vice Chairman John Beck called the meeting to order at 9:47 a.m. A quorum was present. Also present were co-General Managers/CEOs Travis Kupper and Jason Bentz, Chief Financial Officer Alex Craigmile, Legal Counsel Tom Bair, Chief of Staff/Line Superintendent Dale Nagel, Manager of Member Relations Marcy Sanders and Executive Assistant Connie Hill.

Consent agenda: There were no additions to the consent agenda. The consent agenda was approved as presented.

Strategic/action: Bentz and Kupper presented the co-general managers' report, which included updates from various meetings attended. A Basin Electric Power Cooperative CEO report was also provided for the board to review.

Action items: The board appointed voting and alternate delegates for the National Rural Electric Cooperative Association PowerXchange. The 2024 mutual aid agreement was presented and discussed.

Department reports: Craigmile reported on the Power Vision loan. Sanders reviewed a department report, which included an annual meeting update and a thank you letter from the N.D. FFA Foundation. Dunbar will be providing Microsoft Teams training at the start of the February board meeting. Bair provided a report to the board.

Executive session: The board entered into an executive session.

The meeting concluded with the adjournment and Secretary-Treasurer Carter Vander Wal certified the accuracy of the minutes.

Next meeting date: The next meeting date is set for 9:30 a.m. Feb. 27 at KEM Electric's office in Linton. ⚡

GRANT OPPURTUNITY:

RDFC announce 2024 allotment

The Rural Development Finance Corporation (RDFC) announces it has approved a 2024 grant allotment of \$3,000 per member-cooperative to be used to support community-owned entities, nonprofits and community-based projects.

Eligible projects: community owned businesses (café, grocery store, motel, other); community facilities (such as ambulance services, fire districts, recreation, hospital/clinic, community center, etc.); Workforce development (defined as - training to meet the needs of current and future business and industry in order to maintain a sustainable competitive economic environment; training, development opportunities, continuing education

programs, etc.) or community-based projects (such as school/youth projects, other) that benefit rural areas and lead to community betterment.

Please note RDFC does not provide funds for medical fundraisers or general operating costs.

Matching funds include \$4 of other funds to every \$1 of RDFC funds. RDFC will not require documentation.

The minimum grant amount is \$500; the maximum is \$3,000. The limit is \$3,000 per member-cooperative for 2024.

Applications may be found at kemelectric.com or by calling the office. Please return applications to KEM Electric, Attn: Marcy Sanders.

KEM ELECTRIC COOPERATIVE INC.

DIRECTORS:

Victor Wald, ChairmanNapoleon
 John Beck, Vice ChairmanLinton
 Carter Vander Wal, Sec.-Treas. Pollock
 Dean Dewald, Director..... Dawson
 Carmen Essig, DirectorLehr
 Neil Meidinger, Director Zealand
 Director- At-LargeVacant

Your Touchstone Energy® Cooperative 

MANAGEMENT:

Travis Kupper Co-GM/CEO
 Jason Bentz Co-GM/CEO

Report outages to the following toll-free number: 800-472-2673

Hazleton, Linton and Strasburg exchanges' phone number: 701-254-4666

FIND US ON:



OFFICE HOURS:

Monday through Friday,
8 a.m. to 4:30 p.m.

Website: kemelectric.com / Email address: info@kemelectric.com