

CURRENT NEWS



What's Happening



FEB. 10

High school scholarship applications due



MARCH 12

Director nomination petitions due



APRIL 25

North Dakota Career Tour application deadline

We are now seeking youth to apply for the North Dakota Career Tour! Applications are due April 25.

In case you missed it...

Youth invited to apply for the North Dakota Career Tour

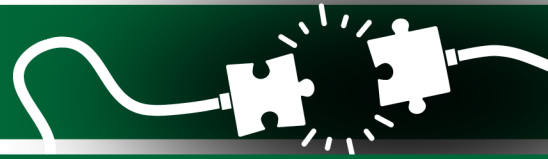
If you've ever been curious about what powers your world, this is your chance to explore. From coal mines and power plants to wind turbines and electric cooperatives, you'll get hands-on experiences and hear directly from the experts who drive North Dakota's energy sector. Learn more and apply on our website, kemelectric.com/north-dakota-career-tour.

Director nomination petitions open

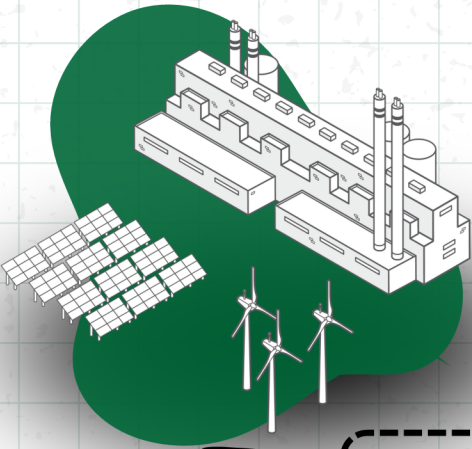
KEM Electric currently has a District-at-Large vacant seat that needs to be filled, along with the District 3 position up for election. Nomination petitions open on Jan. 11 and must be turned in by the end of day on March 12.

Read these stories and more in this month's issue of *North Dakota Living*.

CRITICAL CONNECTIONS



Here's how electricity gets to you ...



1

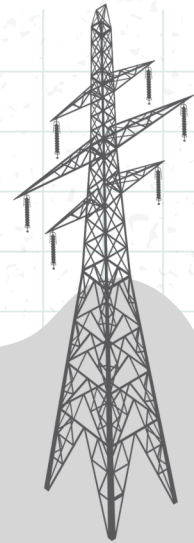
GENERATION

Power plants generate electricity from a variety of energy sources.

2

TRANSMISSION

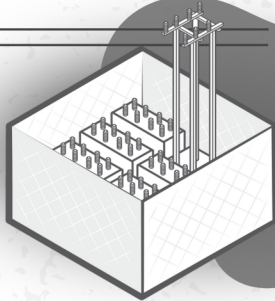
High-voltage electricity travels from power plants over long distances through transmission lines.



3

SUBSTATION

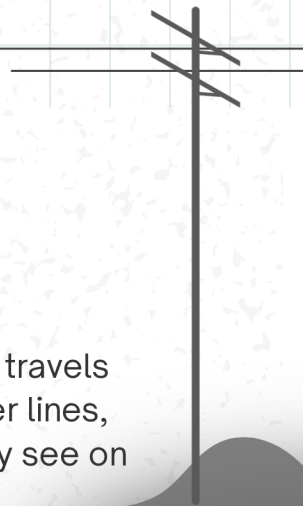
Electricity travels through a substation where the voltage is lowered.



4

DISTRIBUTION

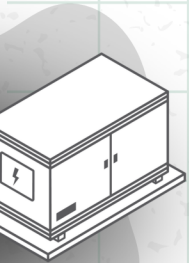
Lower-voltage electricity travels through distribution power lines, like the ones you typically see on the side of the road.



5

TRANSFORMER

A transformer located on the ground or a utility pole reduces the electricity voltage a final time.



6

LAST STOP

Electricity arrives at your home, school or business and is ready for use.

